

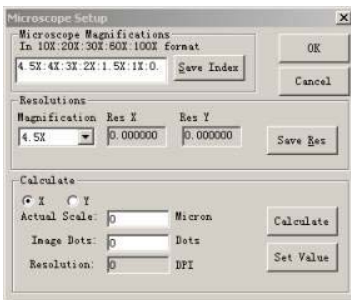
## Introduction to DIAS2.0

Advanced Digital Image Analysis Software version 2.0 (**DIAS2.0**) is an image processing software professionally designed for microscopes. Beside the basic photo editing and processing, **DIAS2.0** has the following characteristics specially designed for the scientific analysis of the captured image through CFM-USB cameras. The main functions of the **DIAS2.0** are listed as 9 l's.

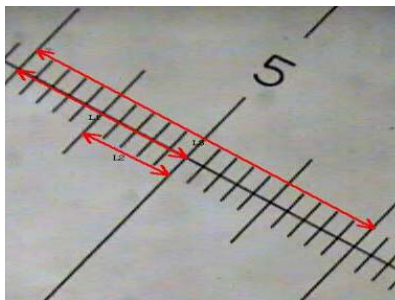
- a) Image archival with data attachment (\*.PTL format, other formats are also supported)
- b) Image capture through VFW and Twain interface
- c) Image cut-&-paste from image to image, image to file
- d) Image basic operations like other similar software are included in the Image menu.
- e) Image layer operation specially designed for the measurement operation (Layer technique is used to separate the measured results and the different results can be put on different layers)
- f) Image processing filter for noise reduction and enhancement (Image enhancement filters, edge enhancement filters, morphology operation filters, User defined kernel filter, include convolution and morphological filters)
- g) Image arithmetic operation between image and image, image and digital number (Including AND, OR, XOR, NAND, NOR, NOT, Add, Subtract, Multiply, Divide, Absolute, Min, Max, Average, Invert, Logarithm, Exponential, Square Root, Square, X to the power of Y operation)
- h) Image pseudocolor, range, segmentation operations are also include in the application
- i) Image zooming and panning operations

## User Interface in DIAS2.0

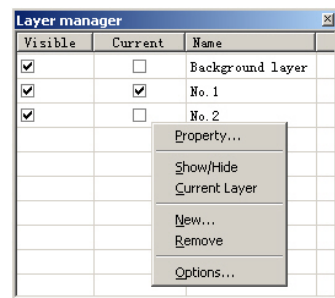
Magnification Calibration



Distance Measurement



Layer Property Manager



Measurement Manager (for file, unit, import and export etc)

Index	Name	Center	Radius	Area	Perimeter	Angle	First Point	Last Point
1	A1	(135.00, 51.33)				0.489	(141.00, 22.00)	(208.00, 69.00)
2	A2	(173.00, 77.33)				0.394	(238.00, 31.00)	(223.00, 104.00)
3	L1	(134.00, 39.00)			92.195	2.717	(92.00, 20.00)	(176.00, 58.00)
4	L2	(213.50, 75.50)			125.419	2.232	(175.00, 26.00)	(252.00, 125.00)
5	P1	(117.00, 33.00)						
6	P2	(65.00, 44.00)						
7	P3	(63.00, 101.00)						
8	P4	(155.00, 127.00)						
9	R1	(166.50, 67.50)	00	276.000			(123.00, 42.00)	(210.00, 93.00)
10	Rr1	(257.00, 53.00)	62	132.531				
11	E1	(76.00, 86.50)	31	417.832				
12	E2	(203.00, 130.50)	27	587.478				